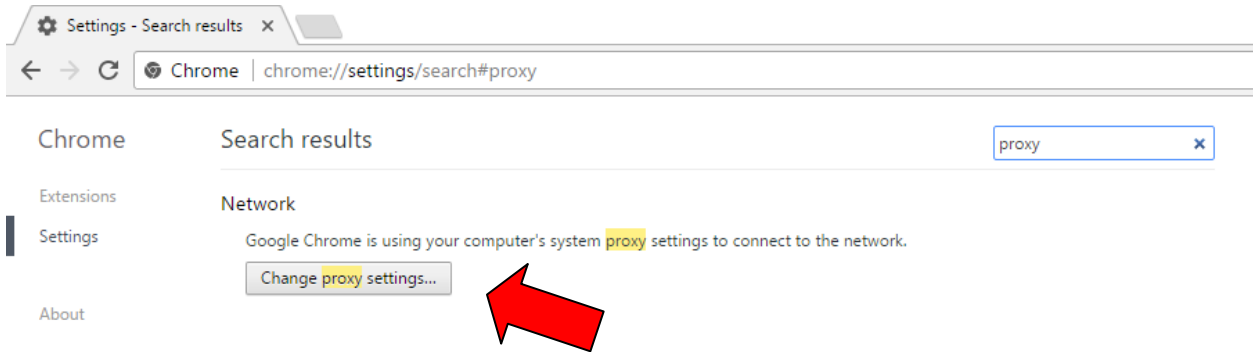


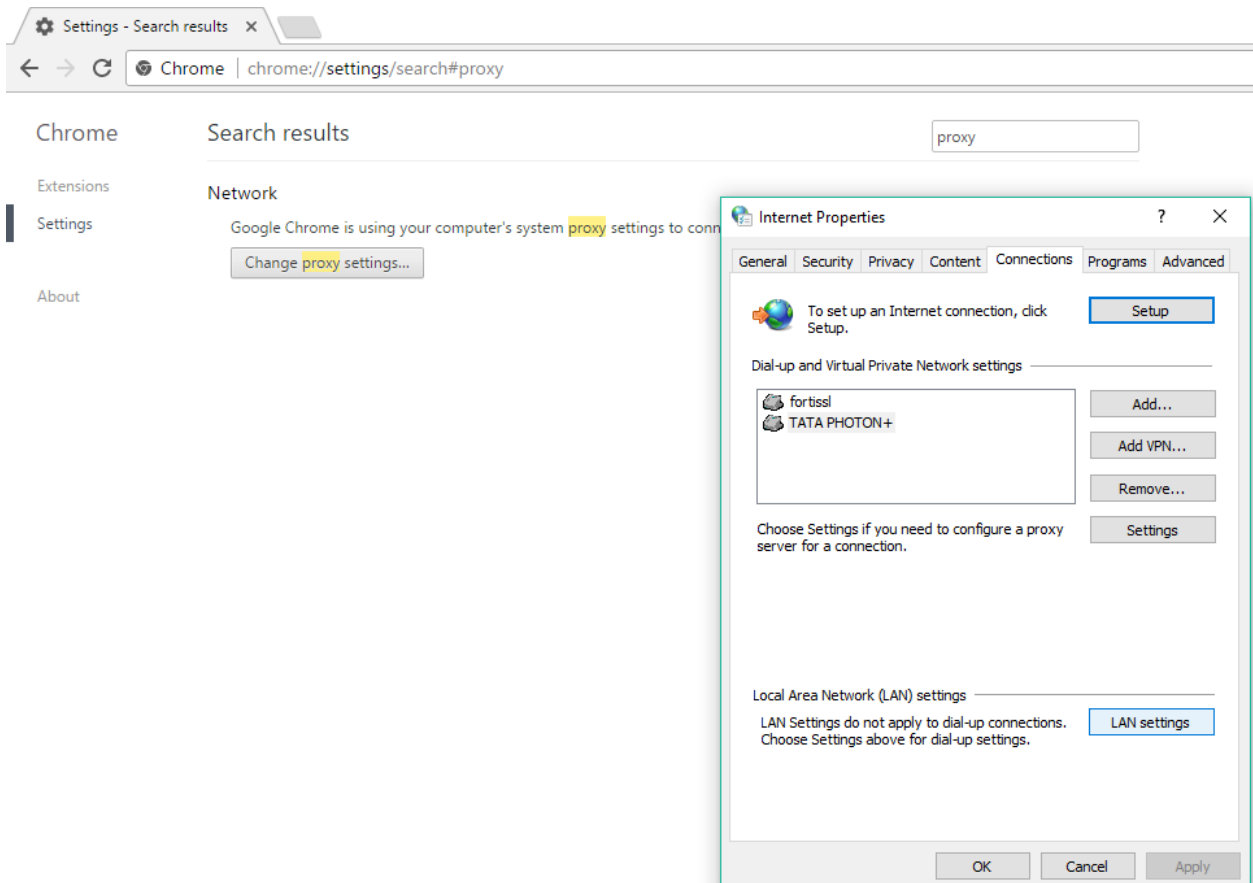
Proxy settings on chrome for Windows

Step1: Open chrome browser and open link chrome://settings

Step2: Write proxy in search box and click "Change proxy settings..." button.



Step3: Now click on "LAN settings" button.



Step4: Check "Use a proxy server for your LAN" and fill the proxy server details, Click OK then OK.

The image shows a Chrome browser window with the settings page open. The search bar contains the word "proxy". The "Network" section is visible, with a "Change proxy settings..." button. A red arrow points from this button to the "Internet Properties" dialog box. The "Local Area Network (LAN) Settings" tab is active, showing the "Proxy server" section. The checkbox "Use a proxy server for your LAN (These settings will not apply to dial-up or VPN connections)." is checked. The "Address" field contains "jnsiproxy.itk.ac" and the "Port" field contains "3128". There are "OK" and "Cancel" buttons at the bottom of the dialog box.

Settings - Search results x

Chrome | chrome://settings/search#proxy

Chrome

Search results

proxy

Extensions

Settings

About

Network

Google Chrome is using your computer's system proxy settings to connect to the Internet.

Change proxy settings...

Internet Properties

Local Area Network (LAN) Settings

Automatic configuration

Automatic configuration may override manual settings. To ensure the use of manual settings, disable automatic configuration.

Automatically detect settings

Use automatic configuration script

Address:

Proxy server

Use a proxy server for your LAN (These settings will not apply to dial-up or VPN connections).

Address: Port:

Bypass proxy server for local addresses

Local Area Network (LAN) settings

LAN Settings do not apply to dial-up connections. Choose Settings above for dial-up settings.